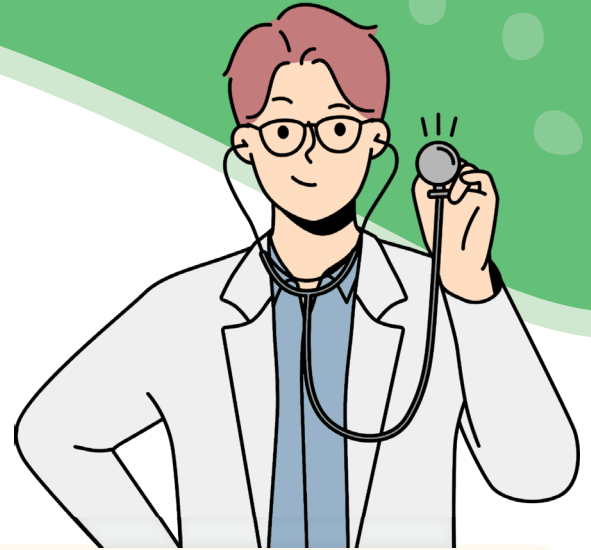


ADULT PSYCHIATRIC ACCESS LINE (APAL)



HealthHaven Recovery

Free statewide support for Virginia primary care providers (PCPs) who see adult patients with substance use concerns!



The Call Line

Same-day mental health consultation for Virginia PCPs concerning an adult patient (18 or older) with substance use concerns.

1-888-371-8627
and press 3 to speak with:

- Addiction medicine specialists
- Adult psychiatrists
- Licensed mental health professionals

You can also request **care navigation**, which connects your patient to accessible substance use, mental health, and other vital resources in their area.

Calls are returned **within 30 minutes** during normal business hours, and there is **no cost** to you or your patient for services.



[Learn More About The Call Line](#)

Continuing Medical Education (CME)

HealthHaven Recovery hosts **low-cost CME trainings** focused on topics in adult mental health and substance use concerns. These trainings are adapted to fit into your busy schedule, so you can continue to support patients in your day-to-day practice while elevating your approach.

Our current core offering is **The REACH Institute: Adult Behavioral Health in Primary Care (ABH)**. REACH ABH empowers Virginia PCPs to gain skills and confidence in assessing, managing, and treating adult mental health and substance use conditions encountered in daily practice. We offer this course several times each year—scan the QR code below to view upcoming sessions.



[Explore CME Opportunities](#)